

## Environmental stress factors: Heavy metals

Metals occur naturally in soil, and soil becomes polluted due to anthropogenic activities. Many of these metals are important micro-nutrients, but all become toxic if they are in too high concentrations.

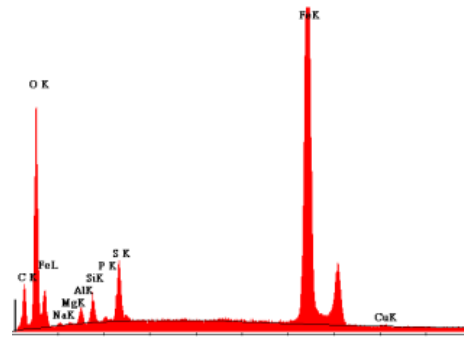
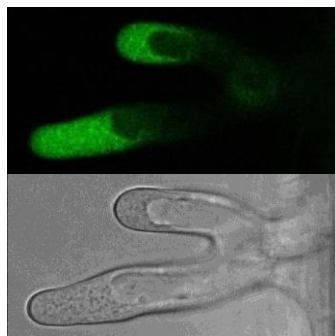
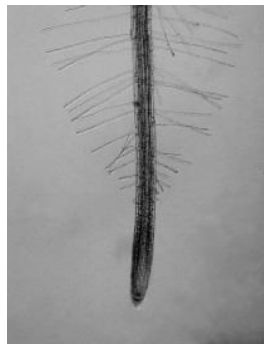
Some plants, however, have developed strategies to deal with this difficult environmental situation.

### Main topics covered will be:

Interaction of plants and soil microbes

Localization of endophytic fungi and bacteria

Uptake and distribution of heavy metals in plants



Irene Lichtscheidl

<http://www.univie.ac.at/cius/>