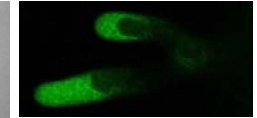


Cell Imaging and Ultrastructure Research



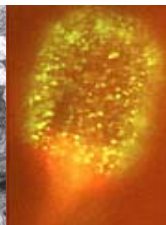
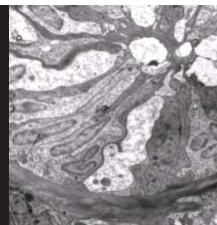
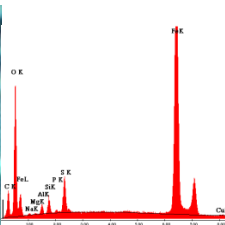
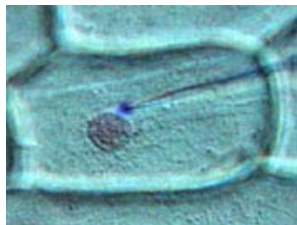
Environmental stress factors: Heavy metals

Tolerant plants / metal accumulators / excluders
Interactions plant – microbes – soil



Ecophysiology of carnivorous plants

Production of attractants / signaling
production of digestive enzymes /
uptake of digested proteins /
movement of leaves upon signals from animals



<http://www.univie.ac.at/cius/>

Irene Lichtscheidl