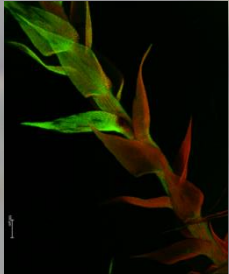


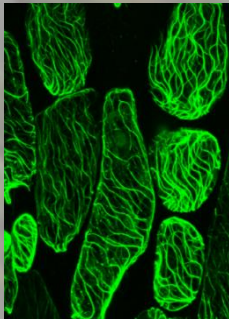
# Environmental Stress at the Cellular Level



Gipskristalle, Moos



*Hypnum* sp., Zink-Färbung (grün)



Mikrotubuli nach osmotischem Stress

## RESEARCH FOCUS

Environmental contamination is a major challenge of our time. We focus on bryophytes and *Arabidopsis* sp. as model species and analyse intracellular changes after exposure to abiotic factors like hyperosmotic stress or heavy metals.

## METHODS

Using light- and electron microscopy, we explore the structural details of tissues and cells and analyse the localization of various elements within them.

Ass-Prof. Dr.  
Ingeborg Lang



<http://cius.univie.ac.at>